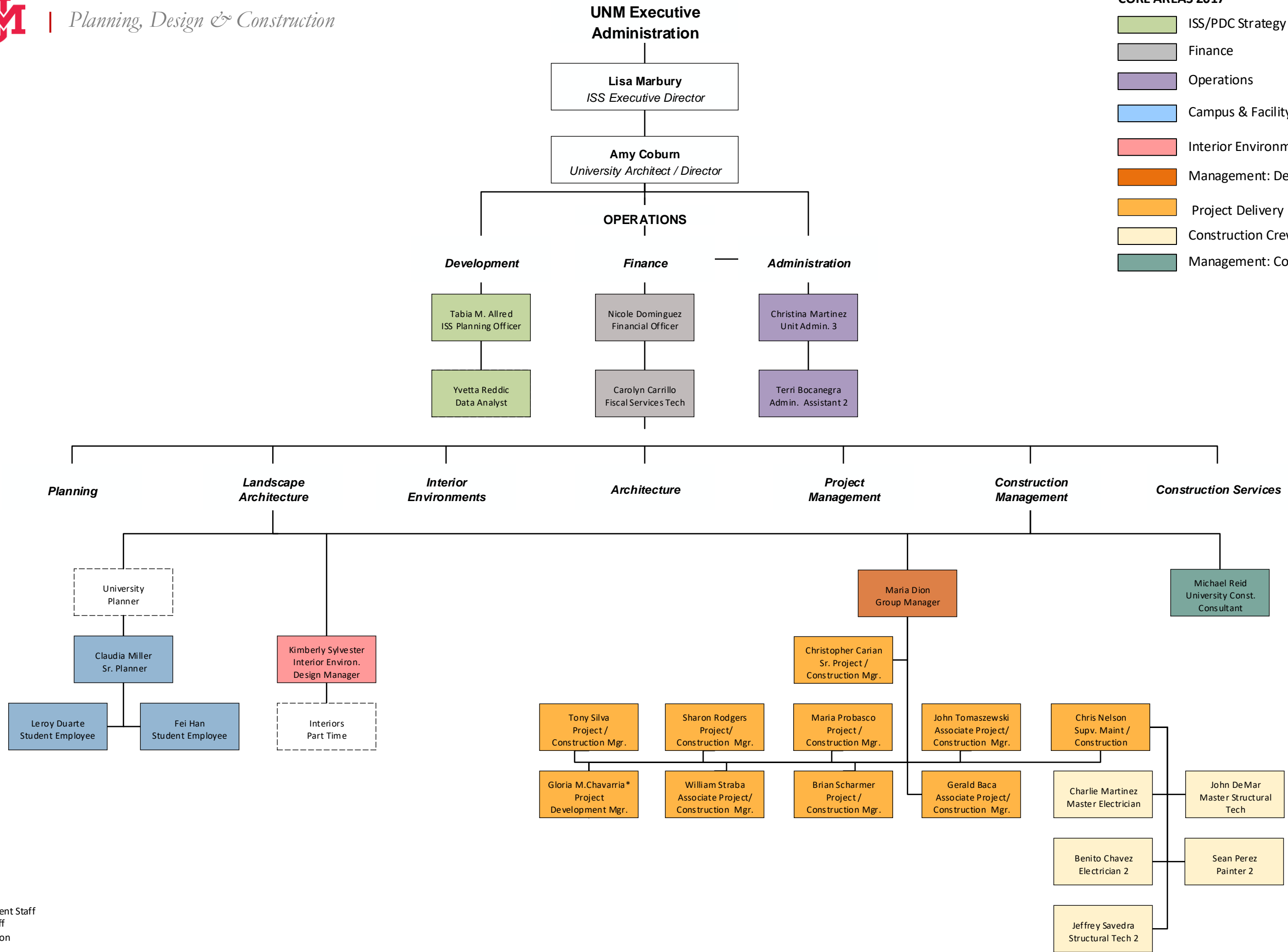


- CORE AREAS 2017**
- ISS/PDC Strategy
  - Finance
  - Operations
  - Campus & Facility Planning
  - Interior Environments
  - Management: Design and Construction
  - Project Delivery
  - Construction Crew
  - Management: Construction



\* Lobo Development Staff  
 \*\* Consulting Staff  
 □ Vacant Position