

Zimmerman Library Grounds & Castetter Cactus Garden

ZIMMERMAN			
Landscape Architect	WPA, Physical Plant		
Date of Construction	1930s		
Recommended Eligibility	National Register	State Register	
Criteria	A	Expansion Period	
Name Origin	N/A		
Primary Materials	Water Feature, Concrete Walks, Earth Berms w/ Grass; Trees & Shrubs		
CASTETTER			
Landscape Designer	Edward P. Castetter		
Date of Construction	1940		
Recommended Eligibility	National Register	State Register	
Criteria	A and C	Expansion Period and Castetter design	
Name Origin	Edward F. Castetter, professor emeritus of biology, former academic vice president		
Primary Materials	Variety of species of cacti, yucca, and other succulents, flagstone and gravel		

Historical Significance

The landscape surrounding Zimmerman Library to the north and west of the building constitute the Zimmerman Library Grounds. To the south of the library’s west wing is a small courtyard, built in the mid-1970s, with a Spanish Baroque Revival fountain from Mexico City donated by former University vice-president Sherman Smith (Figure 18). The Zimmerman Grounds circa 1930s naturalistic landscape of lawns, evergreens, and mature Siberian Elms appear as an



extension of the open space created by the Ash Mall and the Duck Pond (Figure 19). The pine trees on the south side were planted by the WPA and can be seen in 1930s photographs. The area southwest of Zimmerman Library is a continuation of the 1930s naturalistic landscape, altered slightly by berms placed in accordance with the Eckbo plan.

Figure 18: Fountain in courtyard

The Castetter Cactus Garden, planted with a variety of cacti and yucca species, and other succulents, fronts the west side of the library—formerly the building’s main entrance (Figures 20 and 21). Biology professor Edward F. Castetter created this specimen garden to showcase desert plants of the Southwest.

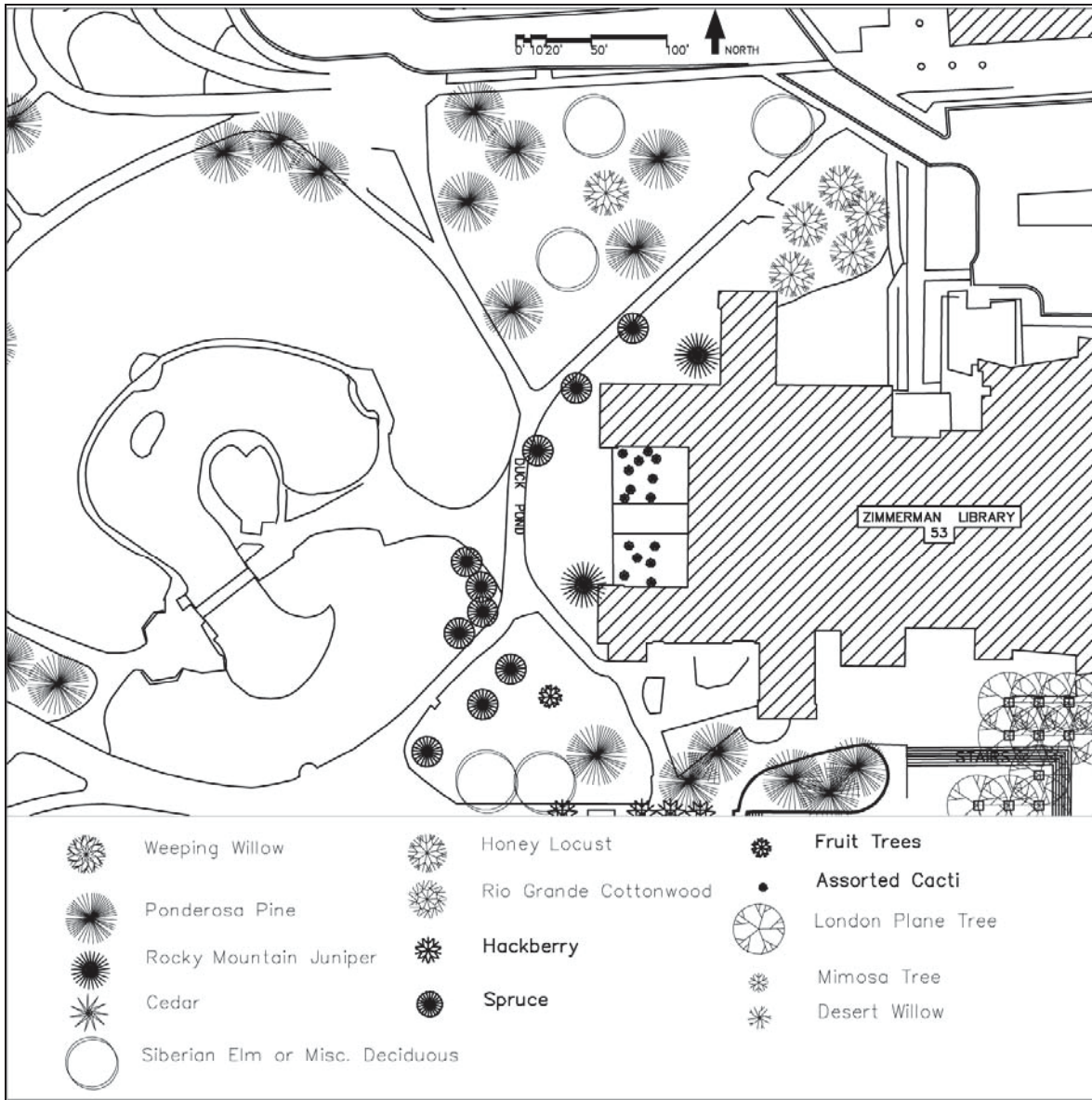


Figure 21: Plan of West Side of Zimmerman Library Showing Zimmerman Library Grounds and Catterer Cactus Garden. Patio with Baroque Revival fountain is not shown.

Source: Will Moses, 2006

Character Defining Features

- Open space extension of Ash Mall and Duck Pond area
- Gently rolling, low hills associated with the north, northwest, and southwest groves.
- The density and general location of trees
- Catterer Cactus Garden
- Courtyard to south of west wing of Zimmerman
 - scale of fountain
 - scale of surrounding visual barrier
 - texture of paving
 - scale of benches and amount of seating